

BAG OPENER

BG 450



Supervac BG 450 bag opener

Your benefits

- ◆ The BG 450 bag opener is used for the automatic, quick and easy filling of shrink bags in a chain.

Function

- ◆ First, the front-most bag of a bag chain is inflated by an air flow.
- ◆ The operator fills the product into the bag via the working platform that can be adjusted in height and inclination.
- ◆ The operator then separates the filled bag from the carrier chain; the next bag is pulled up automatically and is opened by an air flow so that this bag is now ready for the next product.

Other

- ◆ Photoelectric scanning of the bag chain.
- ◆ Working platform adjustable in height and inclination.
- ◆ Can be moved on wheels.
- ◆ Stainless steel construction.



Technical data

Working height: adjustable from 840 to 1050 mm.

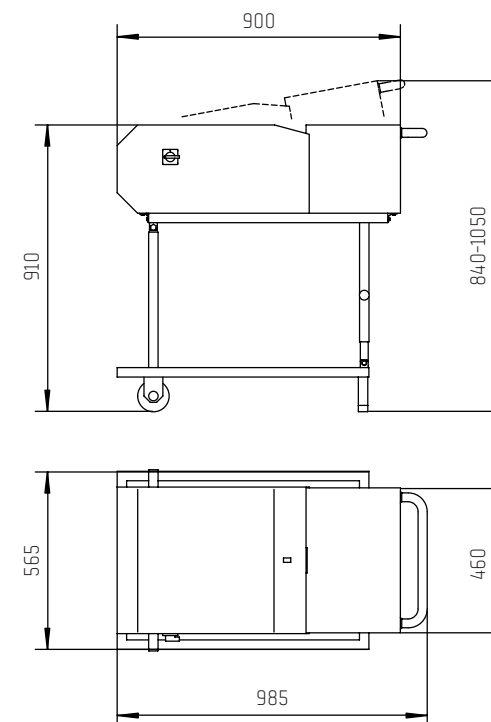
Output: up to 40 bags/minute.

Voltage: 1 ph, 110 V/60 Hz or 1 ph, 220/230 V/50 Hz or 60 Hz.

Other voltages on request.

Maximum bag width: 450 mm

Weight: 54 kg



05/2021 | Supervac is a registered trademark of Supervac Maschinenbau GmbH.
Copyright © 2021 Supervac Maschinenbau GmbH. All rights reserved.

Subject to change.



supervac 
FIRST CLASS PERFORMANCE

Supervac Maschinenbau GmbH
Kalterer Gasse 10
2340 Mödling | Austria

T: +43 2236 50 25 00

E-mail: office@supervac.at
Web: www.supervac.at