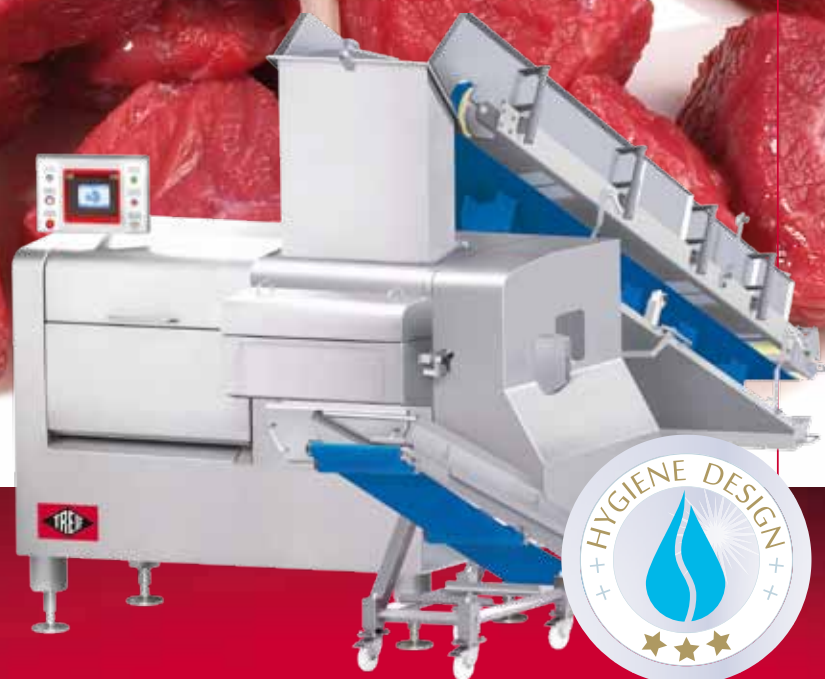




PART OF  
**marel**

# TWISAN

100 mm  
200 mm  
300 mm  
400 mm  
500 mm  
600 mm



Whether frozen or fresh meat – dicing has never been that hygienic before:

**TWISAN**

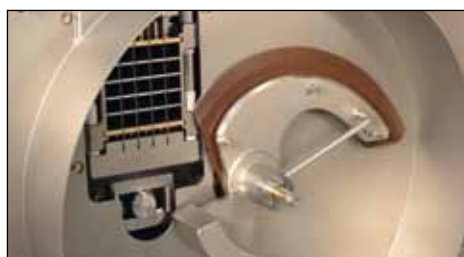


## Whether frozen or fresh meat – dicing has never been that hygienic before

The industrial dicer TWISAN, with the appropriate equipment, consistently delivers optimal dicing results, both with frozen meat blocks and bulk material and also with fresh meat. The machine guarantees your process reliability, regardless whether fresh meat or extremely tempered products are handled. TWISAN also sets new standards in terms of hygiene. Its hygienic design is well thought out to the last detail.



## Frosty precision work – for cubes, strips and more



### Smart „vartronic“ technology

The smart vartronic technology is important, especially when frozen meat is diced. The machine is able to adapt its cutting tools if products are too cold or too hard – thanks to separate drive mechanisms for the lower grid, upper grid and blade.



### Frosty precision work

As frozen meat dicer TWISAN is specialized in dicing blocks of frozen meat and frozen bulk material.



### Breaks down any block

The machine can cut blocks of frozen meat into cubes or strips of up to 75 mm / 3" in length.

## Premium-Hygiene-Design: thought out in detail

### The hygiene package

Benefit from the unique advantages of the new Premium-Hygiene-Design. Here, TWISAN offers a complete package with hygiene features that cannot be found on any other system.

### Collection devices

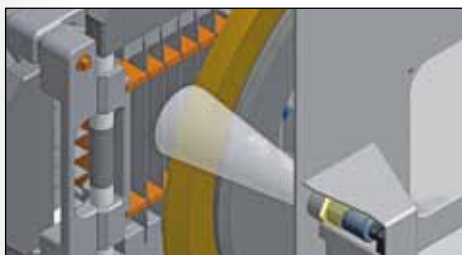
TWISAN is equipped with multiple collection devices ("Hygiene Plus" Collection Systems as option). They allow, for example, drainage of meat juice away from the meat or feed it back to the final product. This also shows the sophisticated hygienic design again.

### PQS

The PQS (Product Quality Separation) prevents possible product residues from entering the OK material. The gridset is shielded by the PQS (also see photo above) so that residual material drops behind the wall where it is collected.



## Precision on 6 sides: Say "yes" to perfectly formed cubes



### Clear cutting results

The Automatic Prepressing System (AVS) guarantees clear cutting results. The sensor (optional) can be used in addition for even more precise cubes and strips, especially for premium demands.



### Cubes, strips, discs

With TWISAN products can be cut in cubes, strips, rasped or, as shown here, cut in 3-mm (1/10") discs.



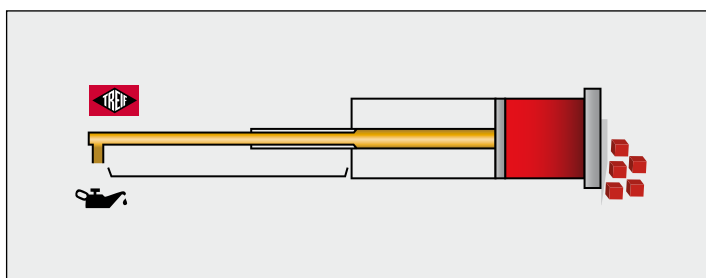
### Various applications

Goulash, strips for gyros, pig's head and pork tongue are just a few of the products covered by the standard program of TWISAN with fresh meat equipment.





## Where hygiene and ergonomics come together: TWISAN



Changing the gridset on an industrial dicer can be this **effortless**. Ergonomics are the top priority for this new assembly trolley. Changing the gridset is **easy and fast** and requires very little effort. Another benefit: it safely stores all removable parts for cleaning (except for the cut-off blade).

Keep track of things: the special wall bracket is designed for **clean and safe** storage of the gridsets which are currently not in use.

The **hygiene cylinder** (supplied as standard) makes product contamination with hydraulic oil a technical impossibility. No oil can enter the cutting chamber.

**Double seals** on the gridset shafts and the blade shaft seal the machine interior even better against the ingress of foreign bodies and moisture.

### Technical data:

Max. output in t/h (theoretical maximum value)	4.5; 9,920 lbs
Max. cut-off length (mm/inch)	1-75; 1/25"-3"
Max. blade speed/min.	400
Cutting chamber size WxH (mm/inch)	150 x 150; 5 9/10" x 5 9/10"
Max. infeed length (mm/inch)	620; 24 2/5"
Housing dimensions (mm/inch)	
Length with conveyor belt/ with lift-tilt-device (mm/inch)	2,345/ max. 3,600 92 3/10" / max. 142"

Width with conveyor belt/ with lift-tilt-device (mm/inch)	4,660/ max. 3,000 183 1/2" / max. 118 1/10"
Height with conveyor belt/ with lift-tilt-device (mm/inch)	2,415/ max. 3,400 95" / max. 134"
Connected load (kW)	15.0
Gridsets (mm/inch)	8/10/12/15/17/19/21/25/ 30/37,5 3/10"; 2/5"; 1/2"; 3/5"; 7/10"; 3/4"; 4/5"; 1"; 1 1/5"; 1 1/2"; more options on request
Weight (kg/lb)	approx. 1,300; 2,866
Product specific accessories	on request

#### HEADQUARTERS:

TREIF Maschinenbau GmbH  
Toni-Reifenhäuser-Str. 1  
D-57641 Oberlohr  
Phone +49 2685 944 0  
Fax +49 2685 1025  
E-Mail: info@treif.com

#### Further LOCATIONS:

TREIF U.K. Ltd.  
Genesis House, Poole Hall Road  
Poole Hall Industrial Estate  
Ellesmere Port, GB-Cheshire CH66 1ST  
Phone: +44 (0) 151 3506100  
Fax: +44 (0) 151 3506101  
E-Mail: treifuk@treif.com

TREIF USA Inc.  
50 Waterview Drive, Suite 130  
Shelton, CT 06484  
Phone: +1 203 929 9930  
Fax: +1 203 929 9949  
E-Mail: treifusa@treif.com

Belgium

China

France

Italy

Russia

[www.treif.com](http://www.treif.com)